



FOR SALE

1935 BRANDON COURT, UNIT B
GLENDALE HEIGHTS, IL

CONTACT US TODAY:

Andrea Hauger

847-706-7153

ahauger@owenwagener.com

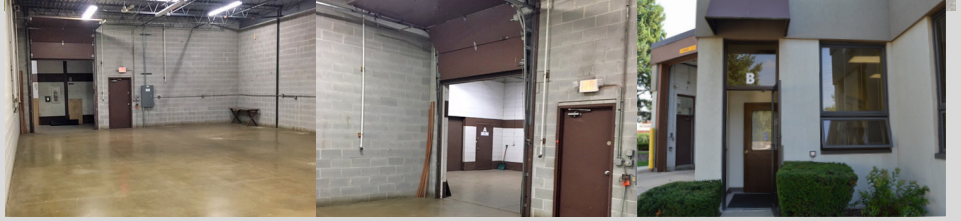
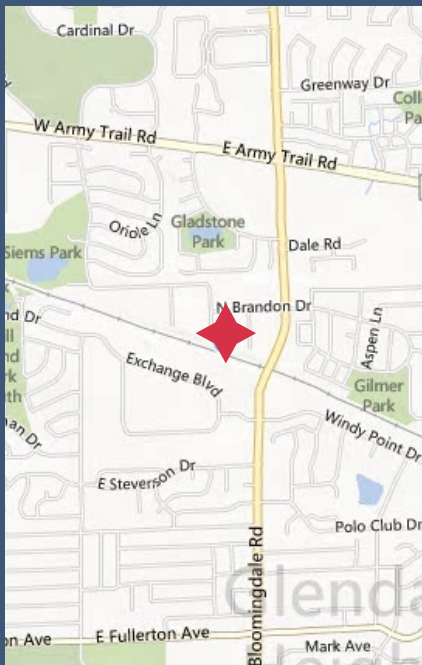
Owen Wagener & Co.

941 N. Plum Grove Rd., Suite B

Schaumburg, IL 60173

www.owenwagener.com

MULTI-TENANT INDUSTRIAL



SPECS:

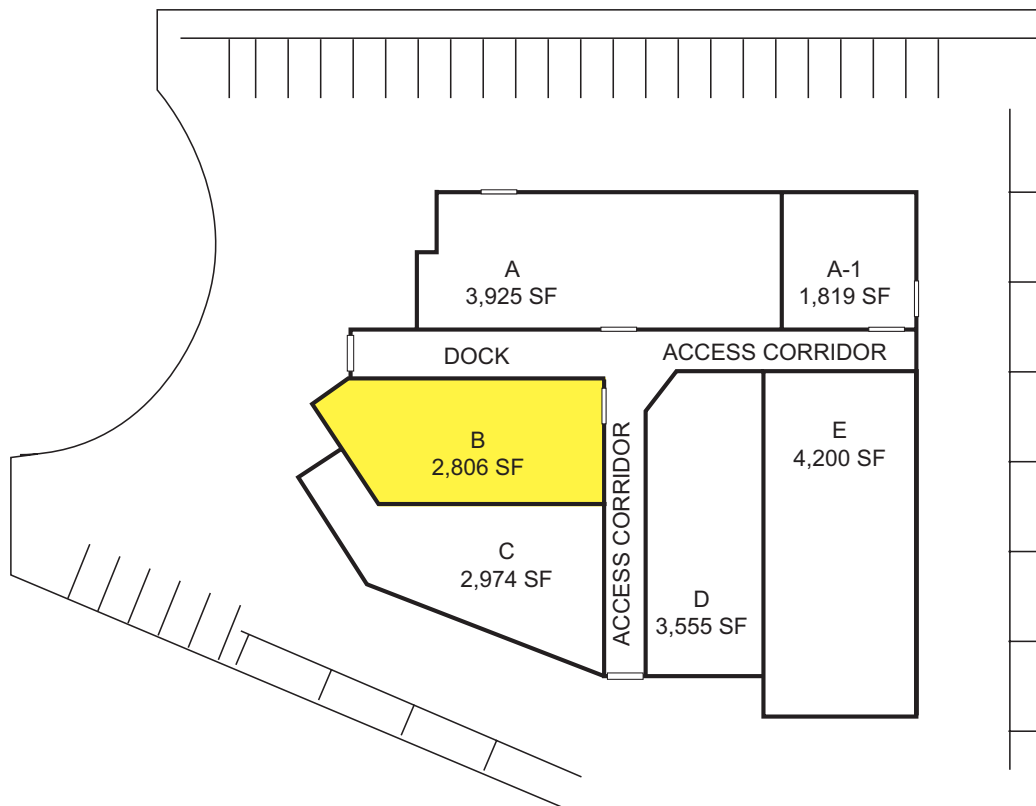
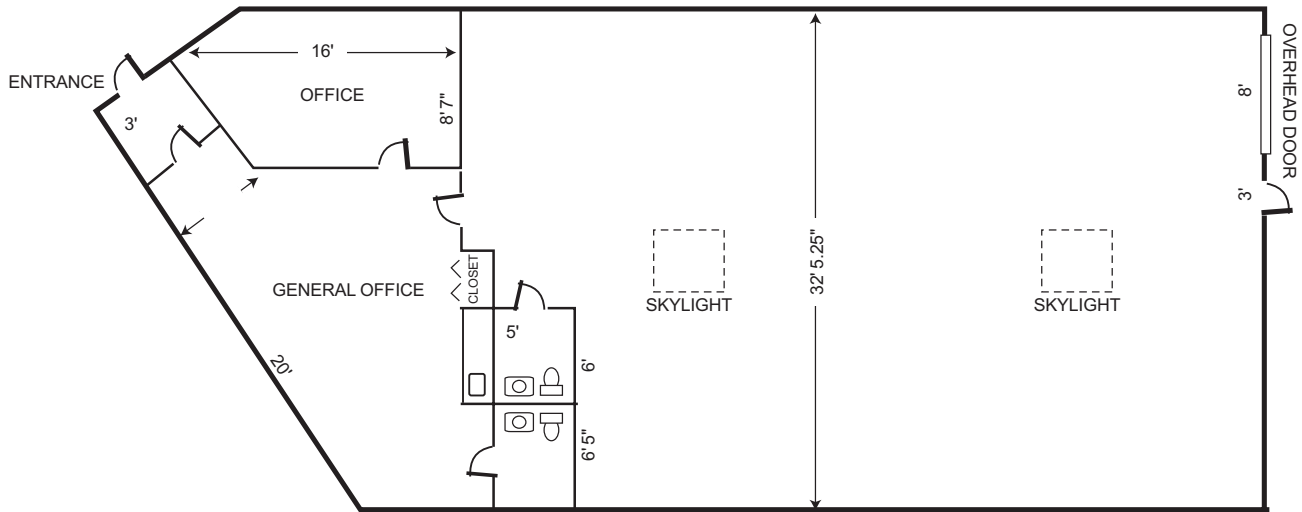
- ONE PRIVATE OFFICE & LARGE COMMON AREA WITH BUILT-IN COFFEE BAR
- GREAT STORAGE, LOADING AND PARKING
- SKYLIGHT IN WAREHOUSE -- GREAT NATURAL LIGHT
- MINUTES TO I-355, I-90, ELGIN O'HARE

Space Available:	2,806 SF
Office Size:	445 SF
Total Building Size:	19,484 SF
Parking:	Ample
Description:	Multi-Tenant Industrial
Heat:	Gas Forced Air
Ceiling Height:	15'
Power:	120/208 VAC 3-Phase, 200 Amp
Loading:	10' X 8' Interior Overhead Door, Common Dock
Zoning:	Industrial
Sprinklered:	Yes
Monthly Rate:	\$2,338.33 (\$10/SF) Modified Gross
Refuse Disposal:	\$40.00/month

All information herein is from sources reliable but not guaranteed accurate. Subject to errors, omissions, and to changes of price and terms, prior sale or lease, all without notice.

1935 BRANDON COURT, UNIT B GLENDALE HEIGHTS, IL

2,806 SF



YOUR CHICAGOLAND COMMERCIAL
REAL ESTATE EXPERT, SINCE 1964.