

FOR SALE

7701-13, 7717-23 & 7757 W LAWRENCE AVE
NORRIDGE, IL 60706

CONTACT US TODAY:

Eric Wagener

847-706-7155

ewagener@owenwagener.com

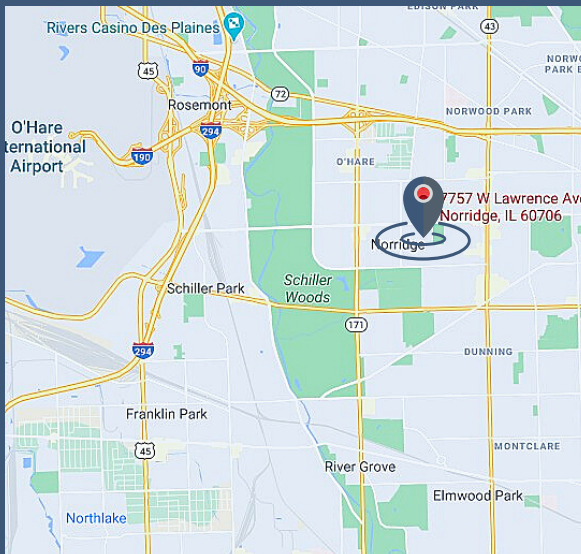
Owen Wagener & Co.

941 N. Plum Grove Rd., Suite B

Schaumburg, IL 60173

www.owenwagener.com

COMMERCIAL,
MIXED-USE,
REDEVELOPMENT



SPECS:

- CITY BLOCK REDEVELOPMENT OPPORTUNITY
- THREE LOTS WITH AMPLE PARKING
- EIGHT UNIT RETAIL AND APARTMENT RENTALS
- SINGLE-TENANT INDUSTRIAL AND SHOWROOM
- MINUTES TO O'HARE AND I-90 EXPRESSWAY

Total Building Size: Multi-Tenant: 26,792 SF

Single-Tenant: 21,609 SF

Description:

Multi-Tenant: 2-Story Retail & Apartment Rental

Single-Tenant: 2-Story Office & Industrial

Land Area:

84,358 SF | 1.93 Acres

Year Built

1961

Parking:

115 Spaces

Loading:

Single-Tenant: Conveyor Belt System

Zoning:

B-2

Taxes:

Multi-Tenant: \$1.70/SF

Single-Tenant: \$5.15/SF

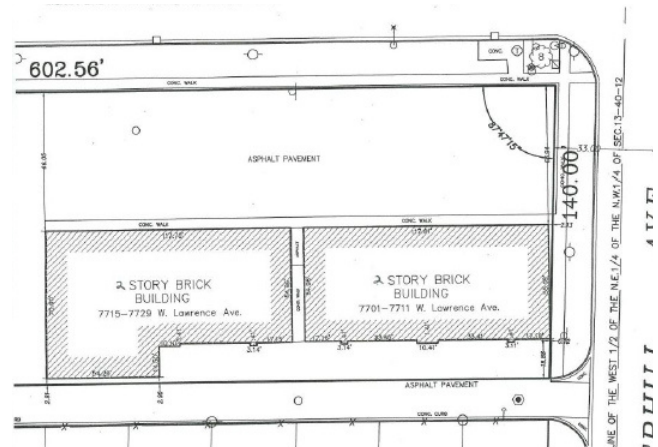
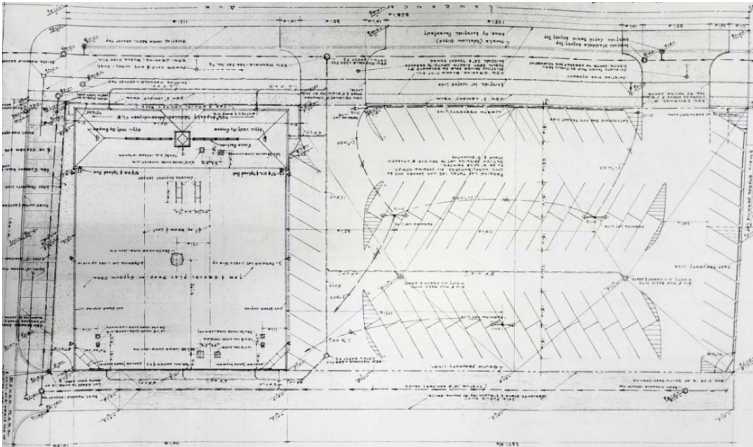
Asking Price:

Subject to Offer

All information herein is from sources reliable but not guaranteed accurate. Subject to errors, omissions, and to changes of price and terms, prior sale or lease, all without notice.

7701-13, 7717-23 & 7757 W LAWRENCE AVE NORRIDGE, IL 60706

84,358 SF | 1.93 ACRES



YOUR CHICAGOLAND COMMERCIAL
REAL ESTATE EXPERT, SINCE 1964.

WWW.OWENWAGENER.COM